



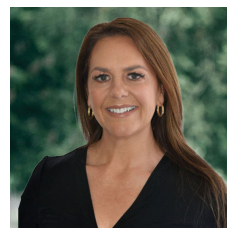
## 44B Argyle Road Maryborough VIC

Attention Developers: Seize the opportunity with this generous 965m<sup>2</sup>(approx.) allotment in Maryborough, a short distance to the Railway Station and MKM shopping Complex. Mostly cleared and services to the property with power and water, this promising land offers exciting potential for a single dwelling to build your dream home or unit development (STCA). Battle axe block with front access and laneway at the rear. Previously had plans for three units but has now expired. Act now to unlock its versatile possibilities in a great location. Call for further information.

**Price** : \$ 160,000  
**Land Size** : 966 sqm  
**View** : <https://www.maryboroughballaratrealestate.com.au/sale/vic/ballarat-western-district/maryborough/residential/land/8030763>



**Alisa Johnson**  
 03 5460 5100  
 0409 935 766



**Kate Ashton**  
 03 5460 5100  
 0418 521 346