

# Maryborough



## 1 Precinct Drive Maryborough VIC

3 2 2

Experience sustainable living in this Japanese inspired architect-designed off-grid sanctuary. Set on a sprawling 7 acres (approx.) this home provides tranquil bushland surroundings, innovative sustainable features, natural beauty, stunning originality, and town convenience.

Constructed with a superior steel frame with a high-strength colorbond roof, this home ensures durability and peace of mind. The interiors are well insulated with fire-rated durra acoustic panels, ortech roofing, and soundshield earthwool insulation, offering unparalleled comfort. Stylish finishes, including double-glazed windows, external roller shutters, and fire-rated external cladding and decking, there is terrific sustainability and a touch of modern elegance.

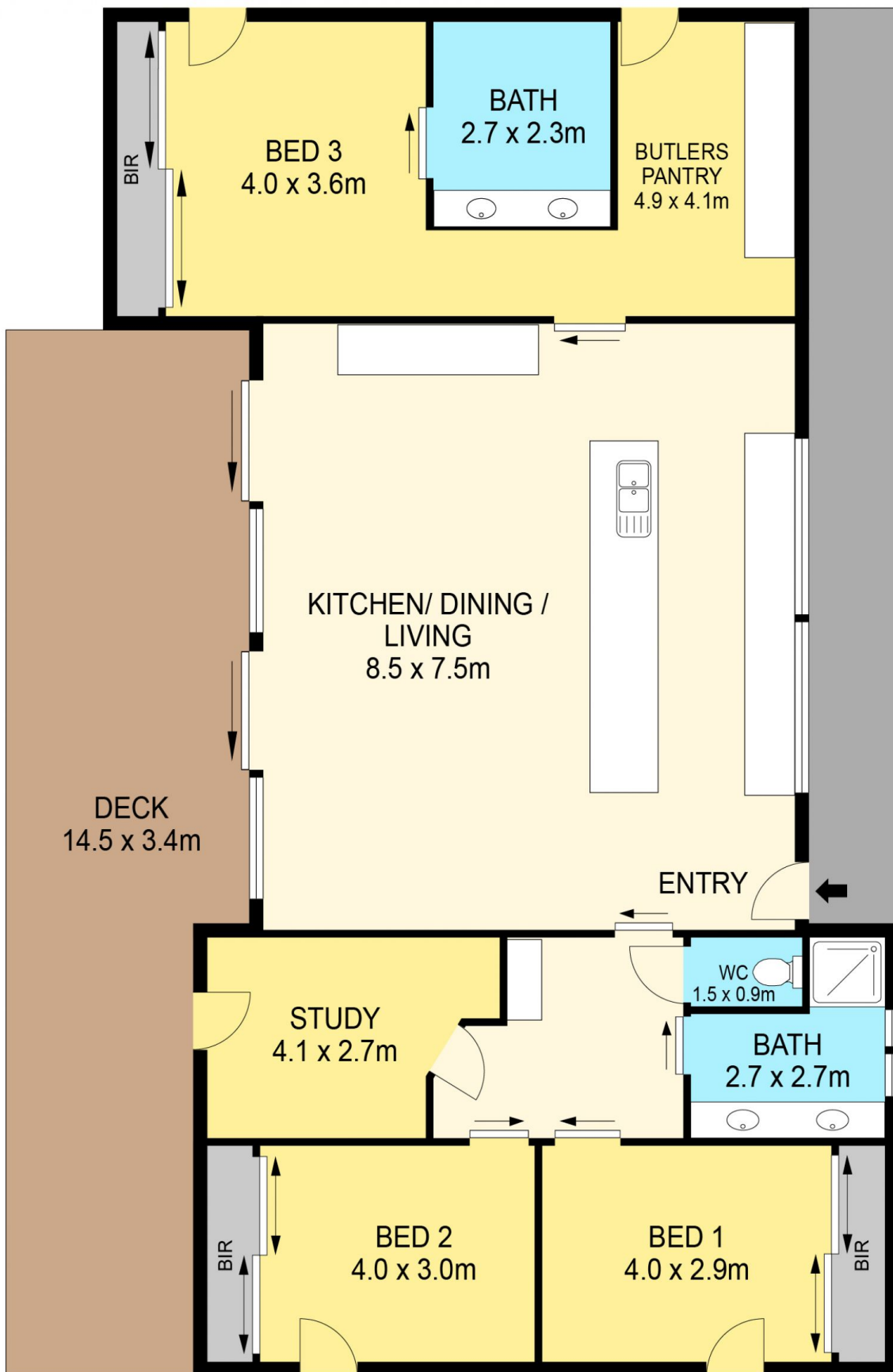
**Price** : \$680,000 - \$730,000

**Land Size** : 7 Acres

**View** : <https://www.maryboroughballaratrealstate.com.au/sale/vic/ballarat-western-district/maryborough/residential/house/8042727>



**Alisa Johnson**  
03 5460 5100  
0409 935 766



**DISCLAIMER**

PLANS SHOWN ARE FOR MARKETING PURPOSES ONLY. ALL DIMENSIONS ARE APPROXIMATE AND NOT TO SCALE. THEY ARE SUBJECT TO ERRORS AND INACCURACIES AND NO LIABILITY WILL BE ACCEPTED. INTERESTED PARTIES SHOULD MAKE THEIR OWN INQUIRES.

Maryborough

