



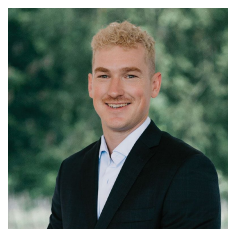
40 Majorca-Rodborough Road Majorca VIC

3 2 5

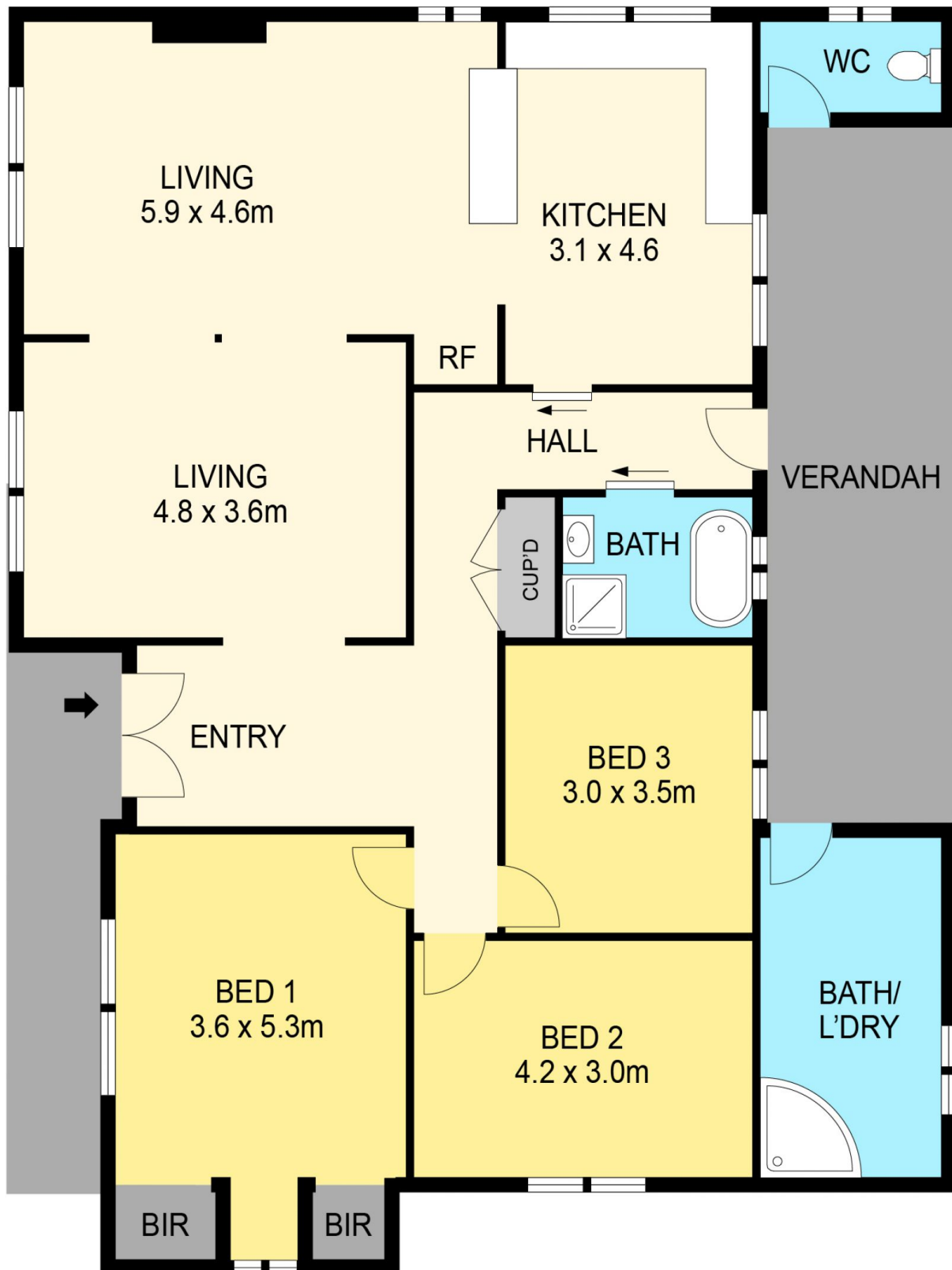
I am thrilled to introduce this exquisite example of countryside living, ideally located just 10 minutes from the thriving community of Maryborough and a quick 50-minute drive to Ballarat. Set on approximately 5.34 acres of mostly cleared land, this property offers an abundance of space for hosting family and friends. Picture yourself relaxing on the front deck, where you can enjoy stunning sunsets every evening.

This home is fully equipped to meet all your needs, with tank water, bottled LPG, and mains power connectivity. Your security is a top priority here, with a remote-controlled entry gate and a state-of-the-art security and alarm system that sends instant alerts to your mobile, ensuring peace of mind. The property also features a double lock-up garage with remote access and a workshop, providing ample

Price : \$679,000 - \$699,000
Land Size : 21688 sqm
View : <https://www.maryboroughballaratrealstate.com.au/sale/vic/ballarat-western-district/majorca/residential/acreagesemirural/8098297>



Monte Reeves
 03 5460 5100
 0447 652 110



DISCLAIMER

PLANS SHOWN ARE FOR MARKETING PURPOSES ONLY. ALL DIMENSIONS ARE APPROXIMATE AND NOT TO SCALE. THEY ARE SUBJECT TO ERRORS AND INACCURACIES AND NO LIABILITY WILL BE ACCEPTED. INTERESTED PARTIES SHOULD MAKE THEIR OWN INQUIRES.

Maryborough

